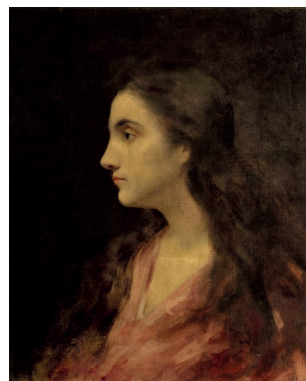




Pan Ioanid
1878–1956



Dimitrie Serafim
1862–1931

**Portretul
mamei artistului**
ulei pe pânză
68 × 55 cm

[18]98

197/47D

**Portrait
of the Artist's Mother**
oil on canvas
68 × 55 cm

[18]98

197/47D

**Portret de femeie.
Sora artistului**
ulei pe pânză
48 × 46,3 cm

[1892]

214/64D

**Portrait of a Woman.
The Artist's Sister**
oil on canvas
48 × 46,3 cm

[1892]

214/64D



Menelas Simonide sau Michel Simonidy
1870–1933



Pan Ioanid
1878–1956

Ostaș român
ulei pe pânză
77 × 45 cm

[1]895

213/63D

Romanian Soldier
oil on canvas
77 × 45 cm

[1]895

213/63D

Studiu de nud șezând
desen în cărbune pe
hârtie
50 × 42 cm

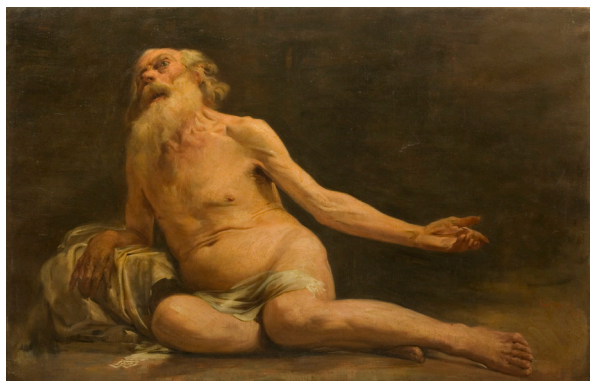
[1898]

198/48D

Seated Nude Study
charcoal on paper
50 × 42 cm

[1898]

198/48D



Pan Ioanid
1878–1956

Studiu de nud. Iov
ulei pe pânză
120 × 80 cm

1898

200/50D

Nude Study. Job
oil on canvas
120 × 80 cm

1898

200/50D



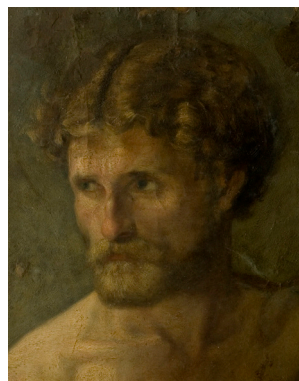
Georgeta Caragiu Gheorghiuță
1929–2018
prof. Gheorghe Ghițescu 1915–1978

Ecorșeu uman
ghips
207 × 52 × 62 cm

800P

Human Écorché
plaster
207 × 52 × 62 cm

800P



Gheorghe Ioanid
1840–1921

Studiu de portret
ulei pe hârtie
31 × 24 cm

[1865]

159/9D

Portrait Study
oil on canvas
31 × 24 cm

[1865]

159/9D



[neident.]

Efebul. Mulaj după
sculptură antică,
copie executată la
atelierul de mulaje
al Muzeului Luvru
patinat
151 × 44 × 62 cm

[1880]

39/139K

The Ephebe. Copy
produced by the Louvre
Museum Casting
Workshop
patinated plaster
151 × 44 × 62 cm

[1880]

39/139K



[neident.]

Faun cu fluier
[Zeul Pan?], mulaj după
sculptură antică, copie
executată la atelierul de
mulaje al Muzeului Luvru
ghips patinat
155 × 52 × 50 cm

[1880]

841K

Faun with Flute
[The God Pan?]
Copy produced
by the Louvre Museum
Casting Workshop
patinated plaster
155 × 52 × 50 cm

[1880]

841K